

# Destino

By Sunshine Developers

*A soulmate called home!*



*A soulmate called home!*



# So Up

Embarking on the wondrous journey of life, it is the soul that breathes true completeness into our existence. Firm believers in the power of destiny, we, as human beings, strive to nourish our souls with experiences that satiate its deepest yearnings. At Sunshine Developers, we have embraced the deep connection between the five elements of nature – Earth, Light, Air, Water, and Space – infusing spirituality into the spaces we create. Our creations are more than just bricks and mortar; they are vessels of spiritual transformation. Enriched with a multitude of profound activities, our spaces offer you the chance to reconnect with your true self, to find solace, and to nurture your soul. Destino, our latest and carefully visualised creation, is an embodiment of all that we believe in, and all that you would desire, in a home.



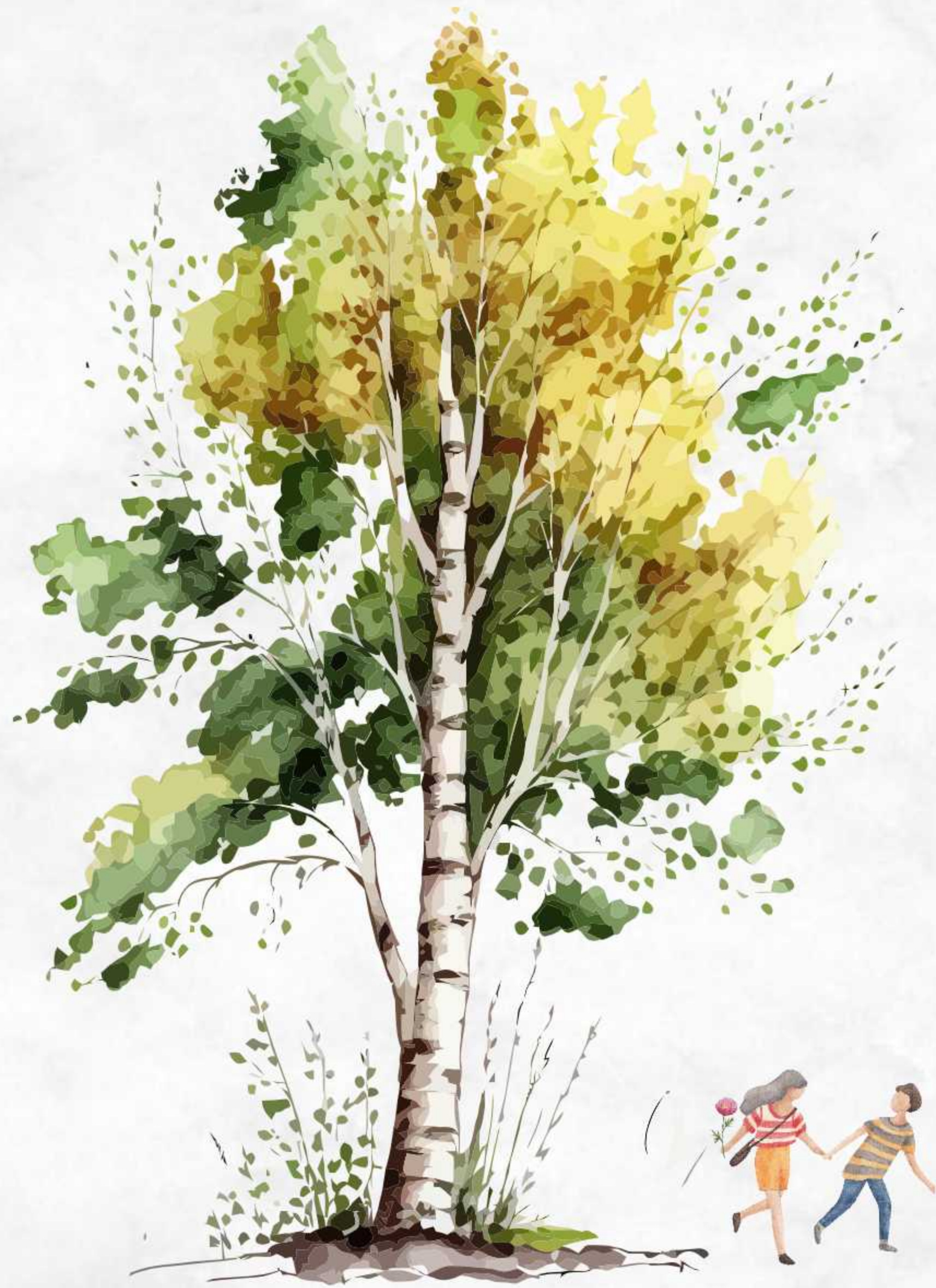


With a deep understanding of the significance of purposeful interactions, we envision Destino, to become a sanctuary for your soul's nourishment. Guided by the harmony of the elements, Destino has been crafted to invoke a sense of spiritual awakening. As you step into this abode, you'll find yourself surrounded by the very essence of Earth, grounding and connecting you to the world around. The gentle caress of Light embraces you, illuminating not just the physical realm, but also your inner being, allowing self-discovery and enlightenment to flourish.

The presence of Water, ever-flowing and fluid, mirrors the journey of life, reminding you to embrace change and the flow of existence. Breathing in the pure Air within our spaces, you'll feel rejuvenated and alive, embracing the vitality it imparts to your soul. And within these spaces lies the freedom of infinite Space, inviting you to explore the depths of your consciousness, meditate, and contemplate life's mysteries.

Welcome to Destino, where the elements of nature converge, and spirituality finds its home in every corner of our inspiring abode.





## *Projects Highlights & Features*

5.5 Acres Of Biophilic Living

537 Premium Residential Flats

Futuristic Homes

2 Opulent Clubhouses

Located near Financial District

Vertical Plantation at Every Level

Lush Greenery Amidst Earthen Texture



### *Balconies: Nature's Serenade*

Step onto your own private balcony, and nature greets you with open arms. Lush greenery and the city's rhythm harmonize, to create a symphony that fills your heart with joy. It's your own little sanctuary where you can connect with nature amidst the urban hustle and bustle.

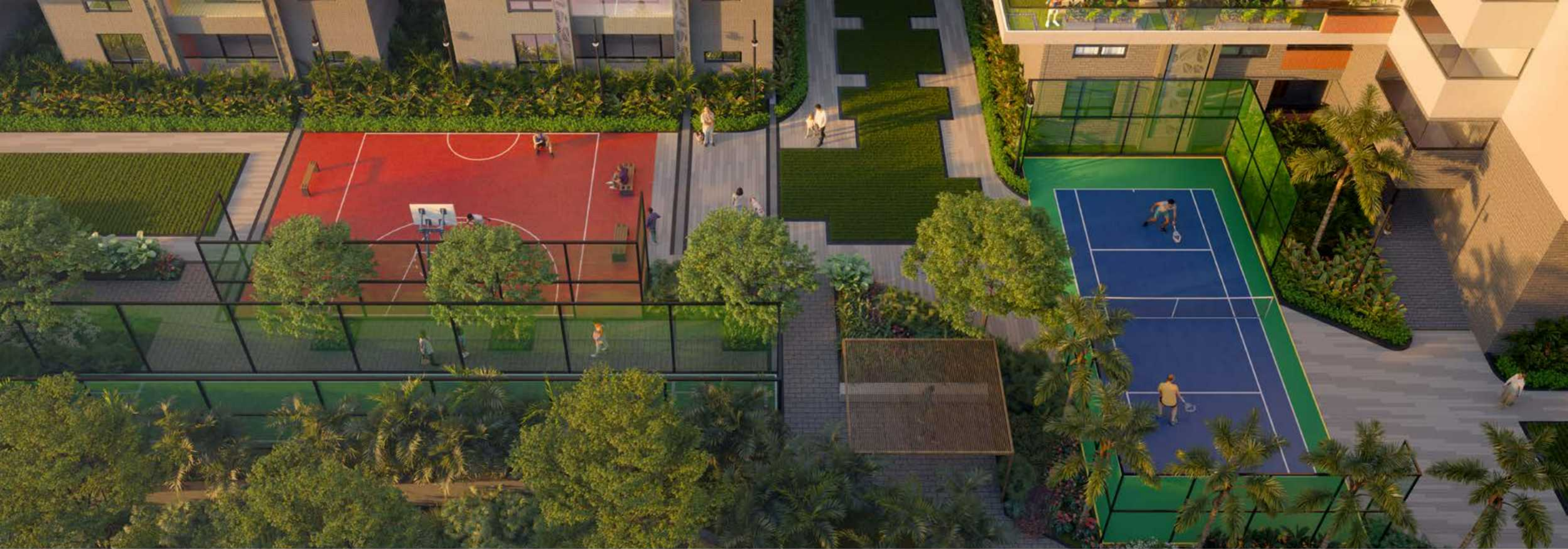


# De Ra Urth

*In the boundless embrace of Earth, the Soul finds its sanctuary*

Destino is more than just a collection of homes; it's a warm community where neighbours become friends. Laughter and shared moments create a tapestry of connections that make this place truly special.





## *A haven of Greenery*

Destino has been thoughtfully crafted, ensuring that the design resonates with your soul. Our Architects have carefully woven greenery and open spaces into the very fabric of the community, nurturing your spirit with the bounties of nature. From lush gardens to serene balconies, each area is a testament to the belief that a harmonious balance between human and nature fosters a sense of belonging and wellness.







*Set your spirit free amidst a paradise of nature's wonders*

Discover the soul-nourishing essence of joy through play, unlocking creativity, kindling curiosity, and forging connections. Embrace life's wonders with a childlike spirit, allowing your soul to flourish in the boundless power of play.





*As you engage in invigorating exercises surrounded by the serene beauty of nature, you'll find yourself tapping into a deeper sense of connection*



Air



Home is not just a physical structure but a sanctuary for the soul, where we unfold our true selves, find refuge, and nurture our spirit amidst nature's wonders, celebrating the interconnectedness of all life.





At Destino, the balcony becomes your soulmate, awakening your spirit each day. From the morning sun to harvesting vegetables, and intimate conversations at night, it nourishes your soul with every experience.







## *Cherish the community*

Community interaction and nurturing relationships have a profound impact on the soul, offering a sense of belonging, support, and companionship. It fosters personal growth, happiness, and a deeper understanding of oneself through shared experiences and emotional connections. Nurture new relationships and a sense of togetherness in the bright and inviting open spaces that have been specially designed for residents to engage with each other.







*Our enchanting outdoor space becomes  
a canvas for imagination to flourish*




Water

*Club 1*





-  Multipurpose Hall
-  Supermarket
-  Conference Room
-  Bar Lounge
-  Associate Office
-  ATM
-  Dr. Clinic
-  Restaurant/Cafe
-  Yoga/Meditation
-  Preview Theatre
-  Business Lounge
-  Co-working Space
-  Suite Room
-  Pharmacy
-  Outdoor Dining
-  Gym
-  Guest Room
-  Swimming Pool/Kids Pool
-  Cards Room

## 2 Clubhouses

At Destino, two extraordinary clubhouses await, each a trove of opulent amenities. The first is a haven for creativity, where your artistic soul comes to life through workshops and well-appointed spaces. The second clubhouse offers luxurious indulgence, pampering you with fine experiences that elevate your everyday living to new heights of comfort and opulence.

Destino's clubhouses are oases of modern amenities and essential services, fostering a vibrant community for residents to connect, unwind, and embrace a fulfilling lifestyle. Discover the true essence of wholesome living in a space designed to cater to your every need.



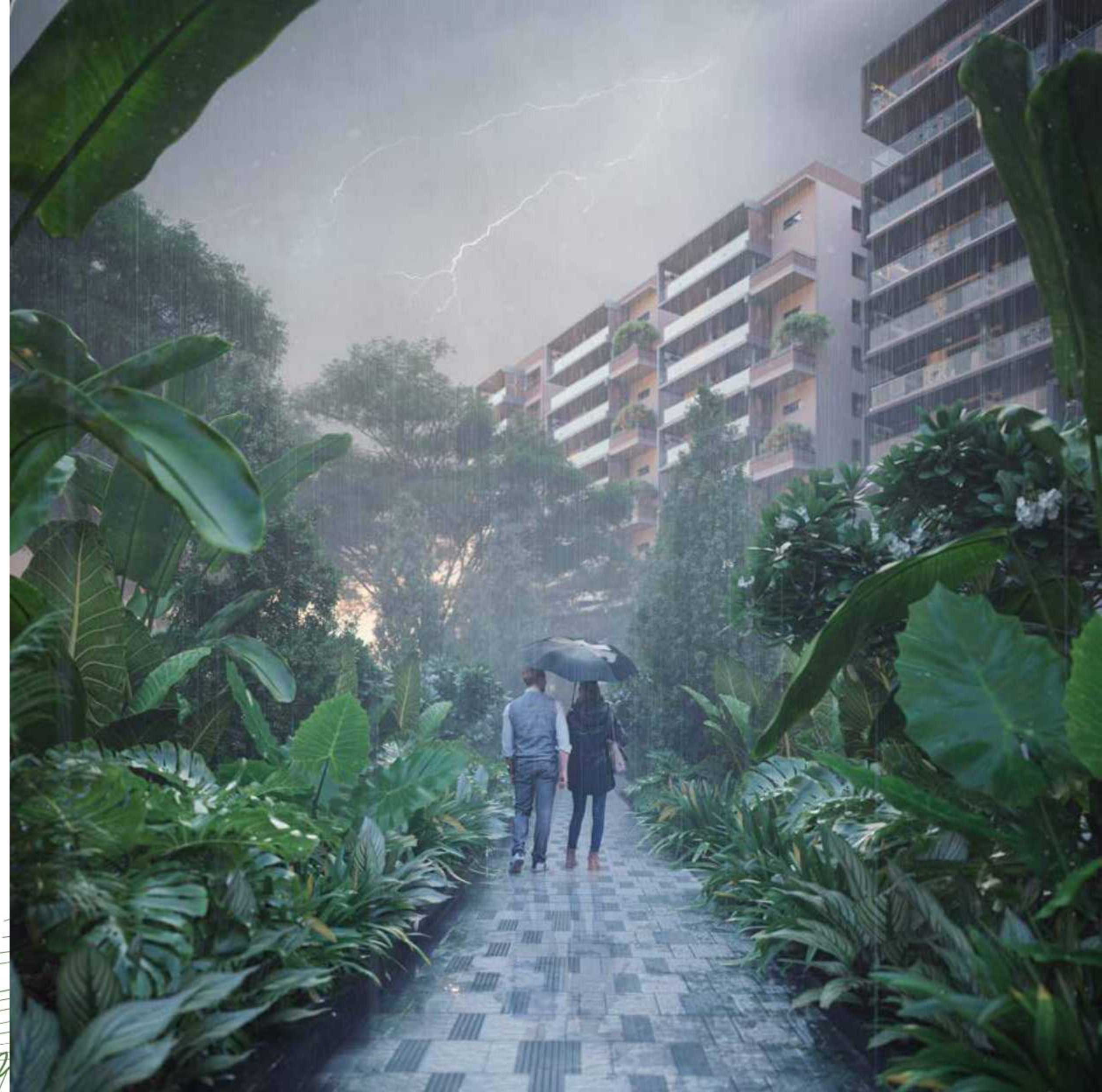
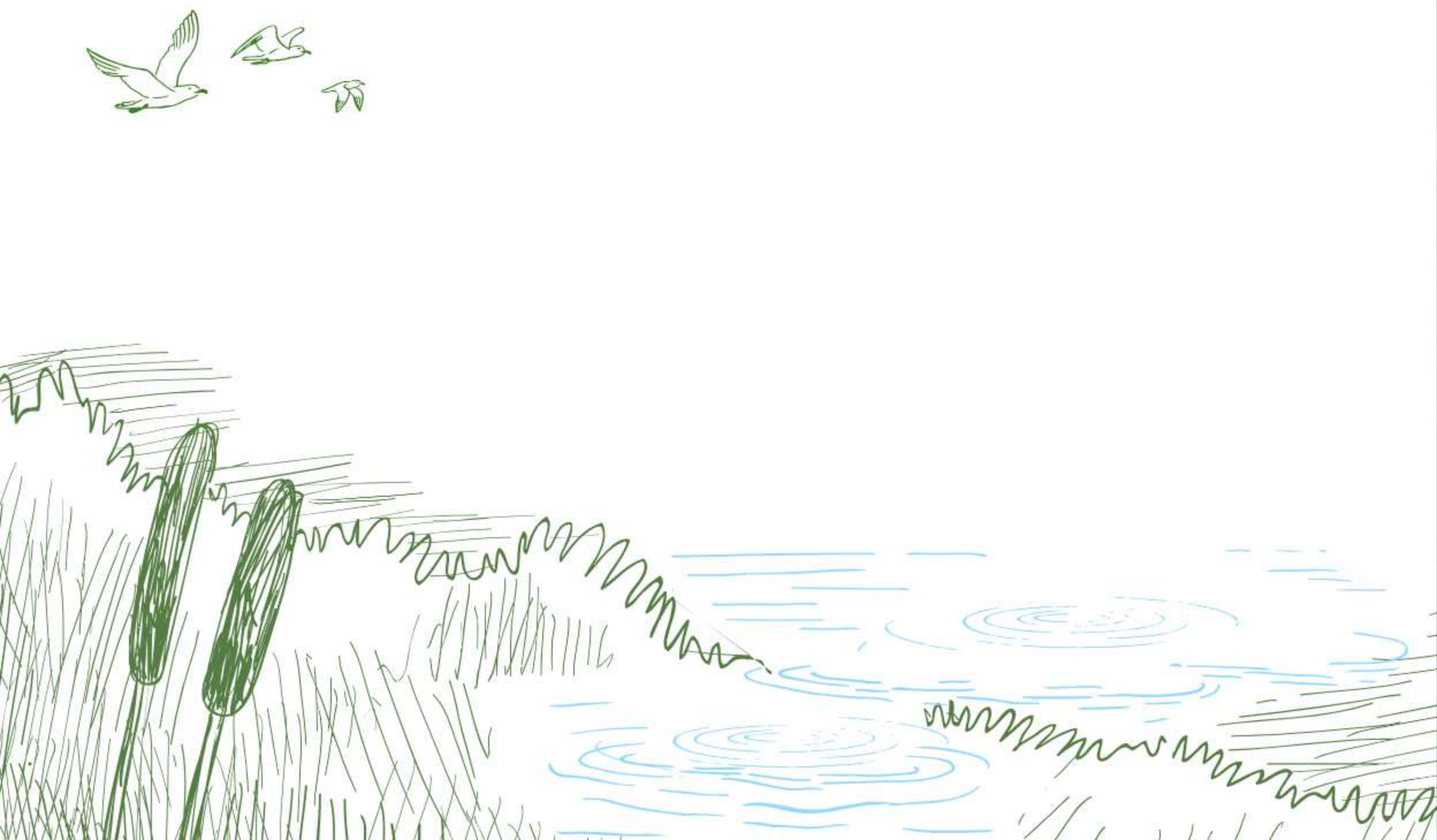


*Rooftop Swimming pool*

Dive in an aquatic haven, surrounded by panoramic vistas, where each refreshing dive unveils a new level of bliss.



Discover the bliss of ample green surroundings at Destino, where pathways invite you for romantic and leisurely walks amidst the enchanting rain.





# Friends

*Club 2*








 Banquet Hall


 Sleep Room


 Party Lawn


 Sauna


 Saloon


 Indoor Games

 Open Restaurant

 Library

 Massage Room

 Aerobics/Zumba

 Barbeque/Kitchen

 Crèche

At Destino, we bring a new perspective to amenities, infusing them with the powerful theme of "Fire." Our second clubhouse embodies the transformative energy of fire, offering not only entertainment and recreation but also essential services that fuel your passion and desire for a vibrant life.



*Immerse yourself in elevated moments with our state-of-the-art party lawn, where every celebration becomes a cherished memory*

*From sunrise to sunset, laughter and conversations  
fill the air as members forge meaningful connections*





space



MASTER PLAN

- ① 7M WIDE OPENING (ENTRY & EXIT)
- ② SECURITY CABIN
- ③ 7M WIDE FIRE DRIVEWAY - GRASS PAVERS
- ④ ENTRANCE WATER FEATURE
- ⑤ GRAVEL BED WITH STEPPING STONES & SCULPTURES
- ⑥ LAWN
- ⑦ PARTY LAWN
- ⑧ HALF BASKETBALL COURT
- ⑨ CRICKET PITCH
- ⑩ TENNIS COURT
- ⑪ TEMPLE LOCATION
- ⑫ OUTDOOR FITNESS ZONE
- ⑬ PATHWAY/JOGGING TRACK
- ⑭ AMPHITHEATRE
- ⑮ CHILDREN'S EPDM PLAY AREA
- ⑯ KID'S HOPSCOTCH AREA
- ⑰ SEATING UNDER PERGOLA
- ⑱ GRAVEL BED AND TURF LAWN WITH POTTED PLANTS
- ⑲ BOUNDARY PLANTING
- ⑳ SCULPTURE
- ㉑ APPROACH ROAD WITH STEPPED WATER FEATURES AND PLANTING
- ㉒ CENTRAL ISLAND WITH MOUND AND PYLONS



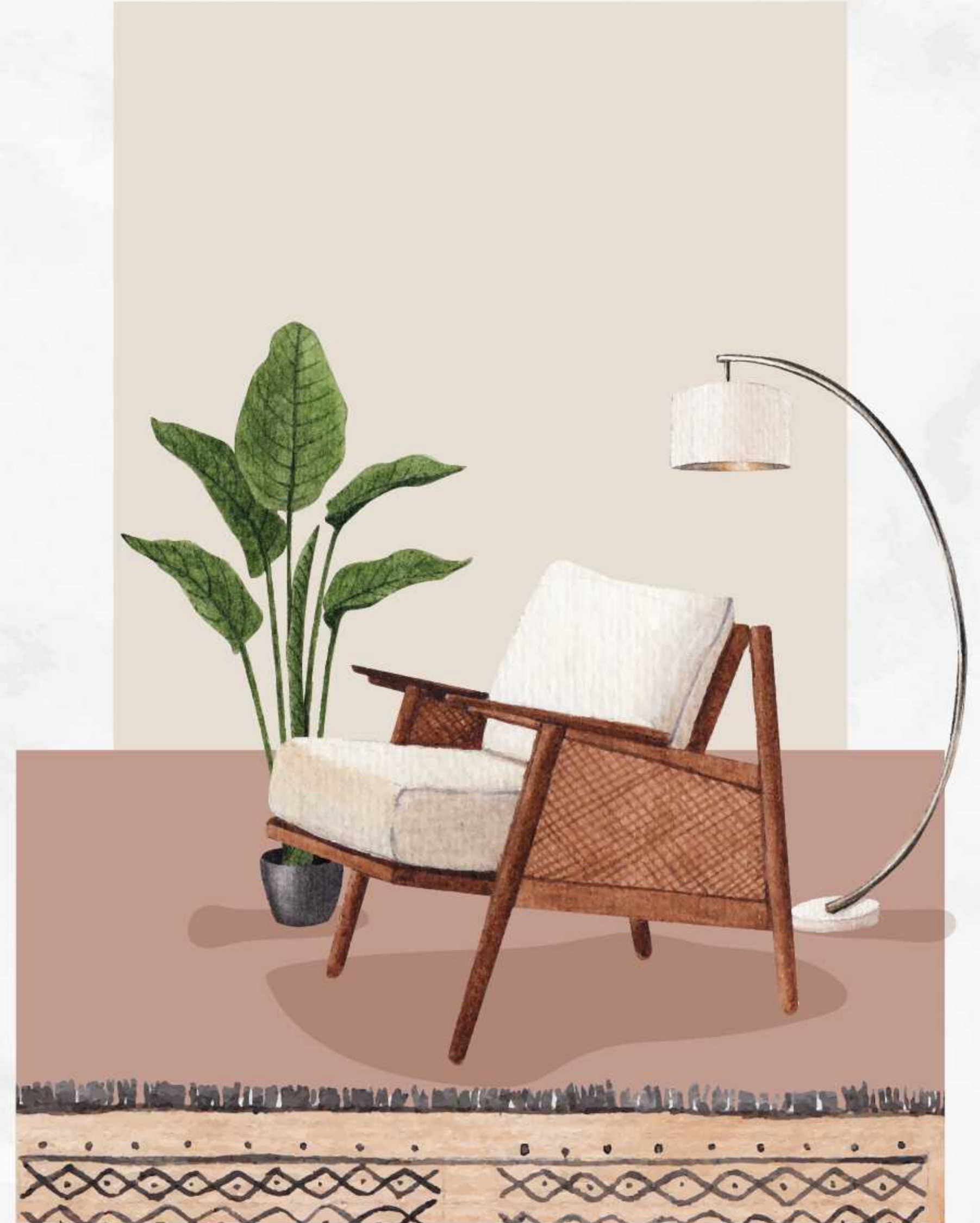
2BHK  
East Facing



3BHK  
West Facing



4BHK  
East Facing







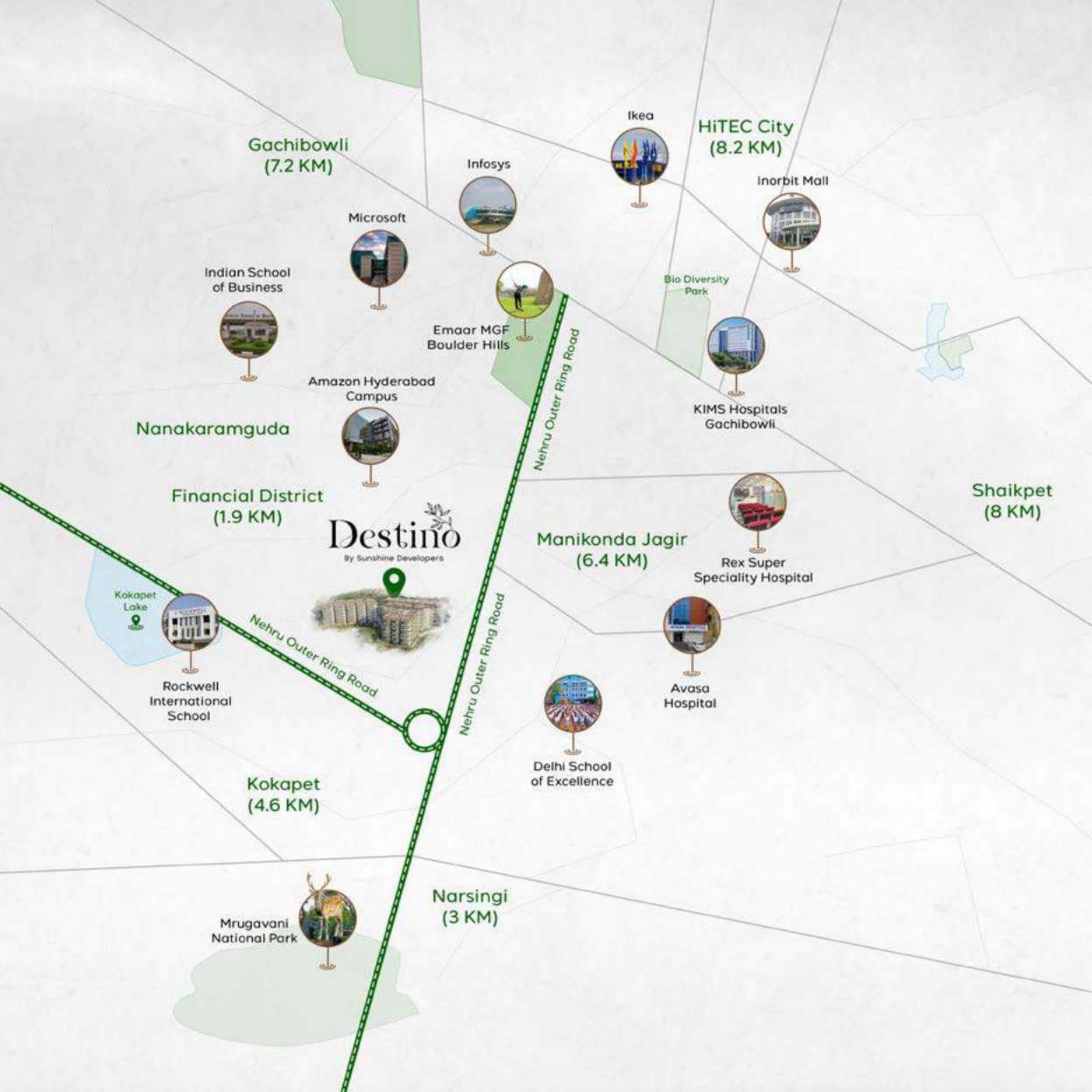




Amidst our community lies the abundance of large open spaces, harmoniously connected to spacious apartments with big-sized rooms. These spaces, akin to the element of Space in nature, offer residents the freedom to expand their horizons, fostering a sense of tranquility and liberation within the comfort of their homes.







### *Work Spaces*

- 3.2 km from Amazon Hyderabad Campus
- 3.2 km from Honeywell
- 3.5 km from Wipro
- 3.7 km from ICICI Bank
- 5.2 km from Microsoft India
- 6.9 km from Infosys
- 9.1 km from Google, Kothaguda

### *Education*

- 0.1 km from The Future Kids School
- 1.3 km from Keystone International School
- 2.3 km from Shri Ram Universal School
- 3.4 km from Oakridge International School
- 5.6 km from Indian School of Business
- 7.5 km from Gitanjali Vedic School
- 8.1 km from Sloka The School of Manikonda

### *Hospitals*

- 3.3 km from Continental Hospital
- 5.2 km from Srija Hospital
- 6.1 km from Avasa Hospital
- 6.5 km from Galen MS. Clinic
- 7.0 km from Delight Hospital
- 7.1 km from Rex SS. Hospital
- 7.3 km from KIMS Hospital
- 7.4 km from Andani Hospital
- 8.5 km from Kakatiya Hospital

### *Connectivity*

- 1.9 km from Financial District
- 3.8 km from Nehru ORR
- 5.9 km from Gachibowli
- 6.1 km from Kokapet
- 6.8 km from HITEC City
- 7.9 km from Shaikpet
- 8.8 km from Durgam Cheruvu
- 9.7 km from Kondapur
- 12.1 km from Mehdiptam



# Specifications

## Structure:

R.C.C. framed structure to withstand wind and seismic loads

## Super Structure:

Cement solid bricks of 200mm thick external walls and 100mm internal walls

## Plastering

**External Walls:** 18mm thick plastering with smooth finish

**Internal Walls:** 12mm thick plastering with smooth finish

## Flooring

**Living, Dining, Kitchen:** Premium Vitrified tiles (GVT or Double charged) 1600x800mm in size of reputed make

**All Bedrooms:** 800x800mm Premium Vitrified tiles (GVT or Double charged) of reputed make

**Balconies/Sit outs:** Anti-skid ceramic tiles of reputed make

**Toilets:** Anti-skid and acid resistant tiles of standard make up to door height

**Utility:** Anti-skid vitrified tiles of reputed make.

**Corridors:** Vitrified tiles of reputed make as per architect's design

**Staircase:** Tandur/Kota/Natural stone

## Tile Cladding:

**Bathroom:** Glazed/Matt finish ceramic tiles dado upto 7 feet height

**Utility:** Ceramic tile dado upto 3 feet height and flooring with anti-skid tiles

## Doors and Windows

**Main Door Frame & Shuttter:** Main door frame of 8 feet height

**Frame:** Best Teakwood section with seasoning

**Shutter:** 48mm thick flush door shutter made of solid block board core construction, cross bands and face veneer hot pressed & bonded with phenol formaldehyde synthetic resin adhesive with teak veneer & P.U polish on both sides

**Internal Doors:** Engineered/hardwood door frames and laminated/P. U coated shutter and hardware of reputed make

**French Doors:** UPVC door frames with float glass panelled and provision for Mosquito mesh

**Windows:** 2.5 track UPVC sliding shutter with clear glass panels and provision for Mosquito mesh

## Railing:

**Staircase:** MS Railing of reputed make

**Balconies:** Glass Railing of reputed make

## Wall Finishes:

**Internal Walls and Ceiling:** Water-proof base two coat putty, one coat primer and two coats of premium emulsion paint of Asian or equivalent make

**External:** Combination of Anti dust waterproof Texture/Putty and two coat paint finish for all external walls

## Utility and Wash Area

Provision for washing machine, dish washer and wet area for washing utensils etc

## Security Network:

- CCTV cameras in identified common areas and clubhouse with monitoring and recording from security room

- Solar powered security fence on compound wall

- Boom barriers at the Main entrance with RFID Technology.

- Intercom from security to all flats

- Door Video calling in all flats

## Electrical & Communication

- Concealed copper wiring of RR /FINOLEX/HAVELL or Equivalent and modular switches of reputed make

- Power outlets for air conditioners in all bedrooms and Dining/Living area

- Power outlets for geysers and exhaust fans in all bathrooms

- Power plug for cooking range chimney, refrigerator, microwave ovens, mixer/grinders in kitchen and washing machine in utility area

- Three-phase power supply for each unit with individual meter boards

- MCB of reputed make in all distribution boards

- Telephone points in living room

- Wired internet provision in living room for wireless router connectivity

## Biometric Lock

Biometric lock with biometric access along with regular key operation for main door of Yale or equivalent make

## Home Automation

Basic Home Automation of reputed make with provision for upgradation

## Car Wash Facility

Car wash facility in cellar parking area available at specified area

## BMS

Building management software for gas bank, generator power and general power connection

## Rain Water Harvesting

Rainwater harvesting through recharge wells onsite to improve ground water level

## Facilities for Physically Challenged

Access and non-slippery ramps at all entrances shall be provided for physically challenged, appropriately designed preferred car park, uniformity in floor level and visual warning signages

## Waste Management

Garbage/Chute with separate bins to collect dry waste and wet waste will provided for better disposal

## Landscaping

Landscaping in the setback areas and in tot lot areas as per architect design

## External Lighting

LED light posts with lamp fittings, at setback and landscaping areas and lights in staircase & corridor areas

## Driveway

V.D.F. Flooring as per architect design

## Compound Wall

Compound wall shall be constructed all around the plot with solar fencing

### *Bathrooms & Plumbing*

- All internal and external waterlines are of CPVC Ashirvad/Equivalent
- All sanitary fittings and lines are of P.V.C. Ashirvad/Equivalent
- Wash basins in all bedroom toilets and dining area
- All sanitary fixtures are of Vitra or equivalent make
- Wall Mounted EWC with Flush valve in all toilets of reputed make
- Hot and cold wall mixer / Diverter best brand make with shower.
- Provision for geysers in all bedrooms toilets
- Rain shower in master bedroom
- Cockroach Traps: A detachable stainless-steel trap of reputed make in all bathrooms
- Health faucets of reputed make in all bathrooms

### *Elevators/Lifts*

**Residents / Guests Lifts:** High speed automatic Stainless-Steel Lifts of Mitsubishi/Toshiba or equivalent make with group control and ARD with V3F for energy efficiency

### *Fire & Safety*

Fire alarm, wet risers as per fire Authority regulations.  
Automatic sprinklers at Cellars

### *Power Backup*

**Common Areas:** 100% DG Setup for common areas (Lifts, Corridors, lighting etc)

**Internal Flats:** 100% DG Setup for Lighting and fans

### *WTP & STP*

Treated bore well water will be supplied through an exclusive water softening and purification plant of reputed make

A sewage treatment plant of adequate capacity as per norms will be provided inside the project. Treated sewage water will be used for flushing and landscaping





Sunshine Developers is a Hyderabad-based, young, bright, and dynamic Real-Estate Company, that lays special focus on design and construction of living communities which embrace and blend in the magic of natural settings into them. Sunshine neighbourhoods reflect the bliss of nature in its intent, design, program, execution, and lifestyle. Products from the Sunshine Developers bear the hallmark of the best engineering standards, architectural finesse, aesthetics, and innovative design. We bring you houses that captivate your heart with an uncompromising commitment to providing a sustainable balance between affordability and luxury. With a strong sense of environmental responsibility, we construct homes that meet international construction standards. By designing the best living places, we aim at achieving new heights and establishing ourselves as a leading organisation. Customers looking for a new home to reside in, or just wanting to make an investment, will surely find great value in us.



We are beyond grateful to our valued consultants for their expert support and professionalism.



Principal  
Consultants



MEP  
Consultants



Structural  
Consultants



Landscape  
Architects



Visuals & CGI  
Consultants



Branding and  
Communication



# Destino

By Sunshine Developers

A PROJECT BY



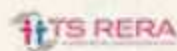
Address: H. No 2-102, Survey No 284, near Future Kids School,  
Puppalguda, Telangana 500089.

Visit our website: [www.sunshinedevelopers.com](http://www.sunshinedevelopers.com)

---

Disclaimer: All Rights Reserved. This brochure is not a legal document. The proposed projects mentioned in the folder will be constructed as per the application to RERA. Artist's impressions and stock images are used to illustrate products and features of these projects.

Gated Community Approved by



Reg.No:  
P02400005718



Approved

Member of

