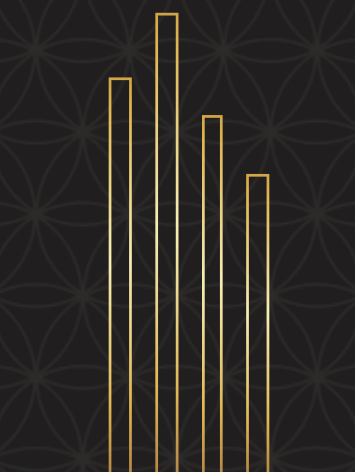


TS RERA APPROVED  
P02400005073

GREENSPACE  
**CELESTIAL**  
ENCHANTING HOMES



KOKAPET





GREENSPACE  
**CELESTIAL**

*Enchanting...*

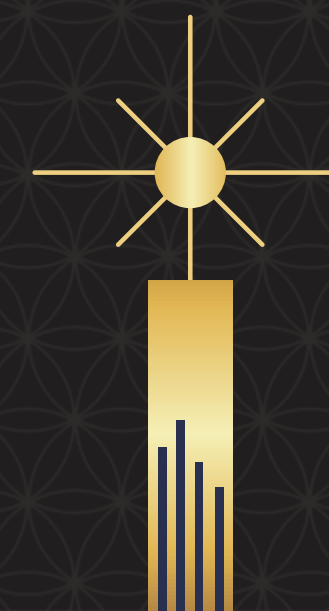
*A magical setting for home,*

*An aesthetically pleasing feature,*

*To fulfill the daily needs of your lovely heart,*

*To give your life a distinctive meaning,*

*To make it uniquely beautiful...*







## Enchanting Homes

A lot of things contribute to making life joyous like family, friends, financial freedom, career well-being etc. But, a home that captures our imagination and makes our life more enchanting is the ultimate.

Welcome to Greenspace Celestial- Enchanting Homes at Kokapet.







Site Area

**8.5**

Acres

No. of Towers

**9**

Structure

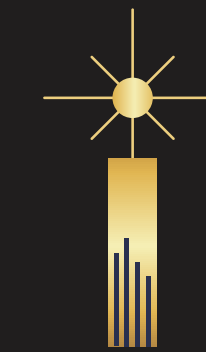
**G+9**

Floors

No. of Units

**750+**

## OVERVIEW



Resident Amenities

**25+**

Type of Units

**2, 2.5,  
3 & 3.5**

BHK

Range from

**1085 to  
2615** Sft.

Clubhouse

**G+5** Floors  
**34,000+** Sft.





# MASTER PLAN

- ### LEGEND
- 1. ENTRANCE GATEWAY
  - 2. ARRIVAL WATER FEATURE
  - 3. ARRIVAL SEATING ZONE
  - 4. DRIVEWAY
  - 5. FEATURED PAVING
  - 6. GRASS PAVERS
  - 7. JOGGING TRACK
  - 8. SEATING AREA
  - 9. AROMA GARDEN
  - 10. DESIGNED SEATING
  - 11. CRICKET NETS
  - 12. CHILDRENS PLAY AREA(SAND PIT)
  - 13. PAVING WITH GRASS BANDS
  - 14. FOCAL PAVILION
  - 15. PLAZA
  - 16. LAWN
  - 17. SEATING PERGOLA
  - 18. CHILDRENS PLAY AREA(EPDM)
  - 19. STAGE
  - 20. DECK
  - 21. SCULPTURE
  - 22. SKATING RINK
  - 23. HALF BASKETBALL COURT
  - 24. PAVILION
  - 25. BADMINTON COURT
  - 26. ELDERLY SEATING



## A home that fulfills new age aspirations

Celestial is a stunning embodiment of elegant sophistication, sheer luxury and ingenious architecture offering both privacy and space to create life-defining moments. If enchanted living is your passion and experiencing magical moments is your aspiration, then Greenspace Celestial should be your destination.







## Welcome a sense of wonder

Step into a world of enchanting homes feeling invited and welcomed from the start. Giving a great first impression, the grand gateway takes you into the stunning community of Celestial. As you walk or drive to your home, the plants along the promenades make them even more joyful.



Approach Road





## Let life experience the magical outdoors

Meet with friends, relax with a book or enjoy the calm breeze in the expanse of the immersive environment. Attractive open spaces, exciting activities make life here more enchanting for the young and young at heart.



Walkway

Seating Area





**Escape to your sports heaven**  
Choose your sport, grab your gear and head out to excel at the sport you love. With plethora of engaging activities for everyone to enjoy, Celestial is truly a sports heaven.



Skating Rink



Badminton Court



Basketball Court







Garden Entry



## Let Relaxation Seep into your Evenings

Discover an enticing getaway when you want to unwind, relax, and have fun. The central courtyard at Celestial is designed to make spending time with family members and friends even more enjoyable.





## Discover an enticing escape at home

Spend few minutes amidst nature and feel connected to yourself and the world again. Dotted with open spaces, lush greens and water bodies, Celestial creates a natural connection amidst the concrete feel of the city.







**Find the fairy place for a kid to be a kid**

Steer your kids away from the gadgets and see them engage in different fun activities. The children's play area in the community offers an ideal environment for your kids to play, enjoy and grow at the same time.

Children's Play Area





## Kick off your training, in your backyard

Find the best facilities to improve your cricket skills. Keeping in mind your daily cricket needs, Celestial offers authentic net cages for you to build yourself, practice in and make a career out of the sport.







Live a home, enchanting in every sense

Get inspired by the opulent living spaces that exemplify contemporary comfort. Stylish features and sprawling indoor spaces with lots of fresh air & light epitomize the sophisticated side of life.

Drawing



Living Area





## Everyone loves a blissful sleep space

Experience a place of great comfort to get a better night's sleep. Displaying an eclectic appeal, every nook and corner of your home gives you an enchanting formula to enjoy the harmonious life.

Bedroom



Master Bedroom





There's something for everyone on the menu!

Share everything from meals to stories with your loved ones in an inviting and connecting space. With modern and functional spaces, Celestial lets you experience life and lifestyles to the fullest.

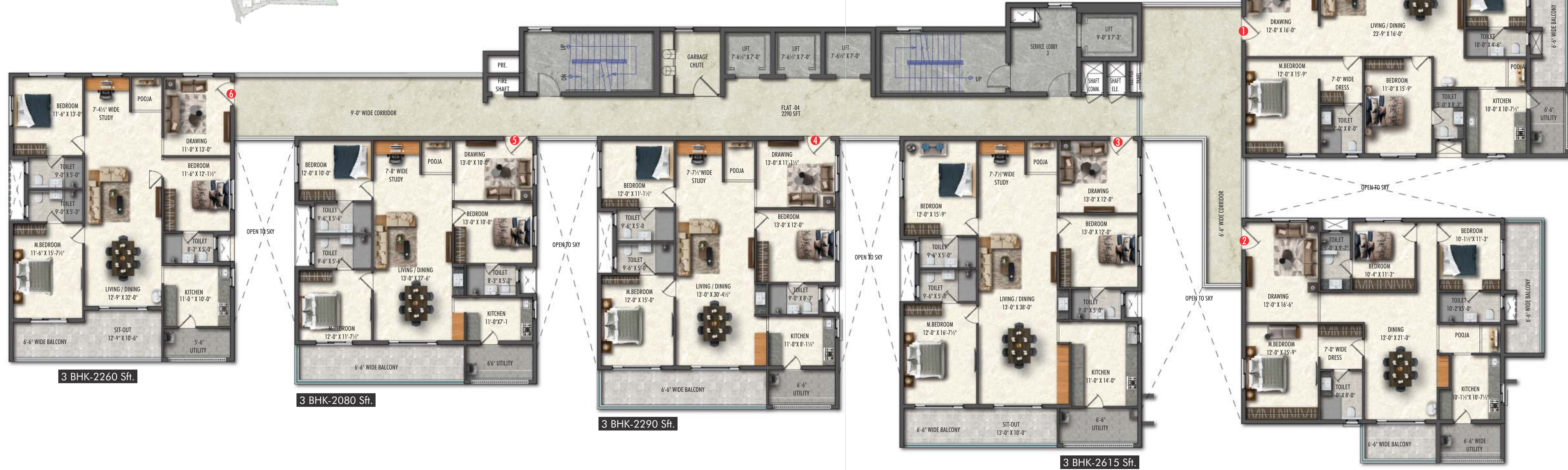
Kitchen



Dining Area



# BLOCK - A



3 BHK-2260 Sft.

3 BHK-2080 Sft.

3 BHK-2290 Sft.

3 BHK-2615 Sft.

3 BHK-2265 Sft.

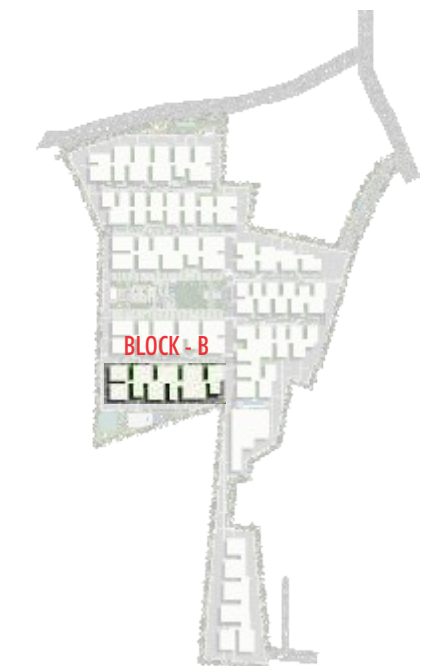
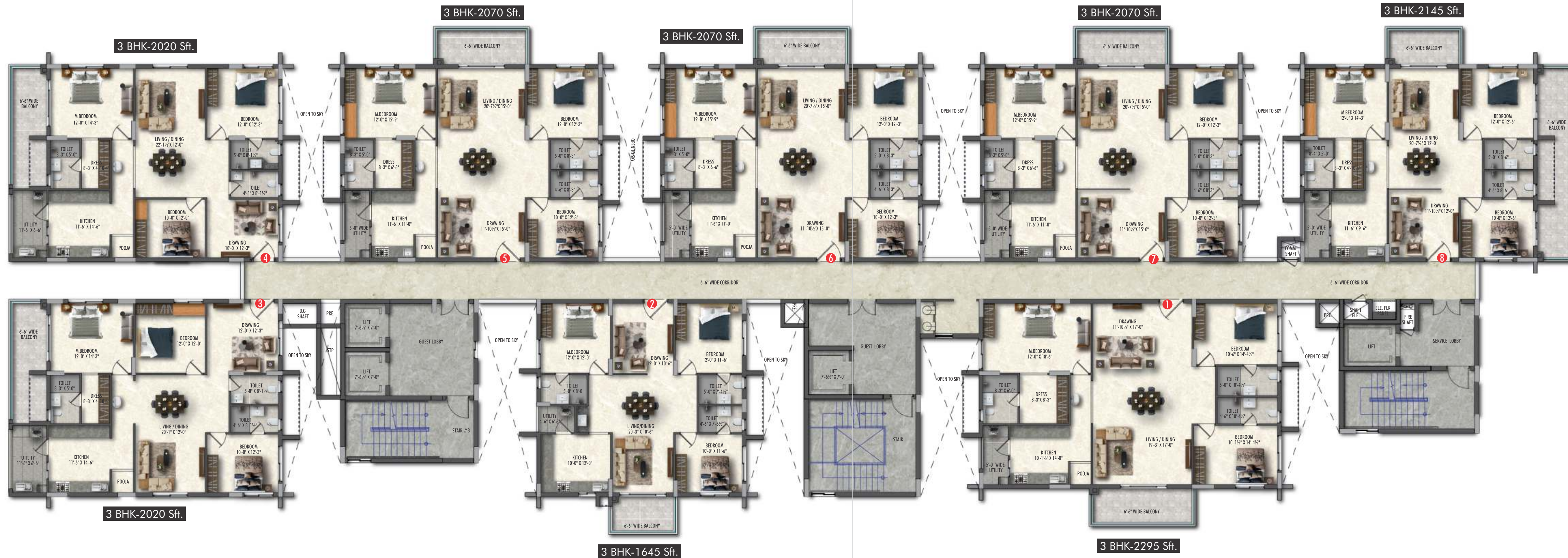
3 BHK-2510 Sft.

FLAT-04  
2290 SFT



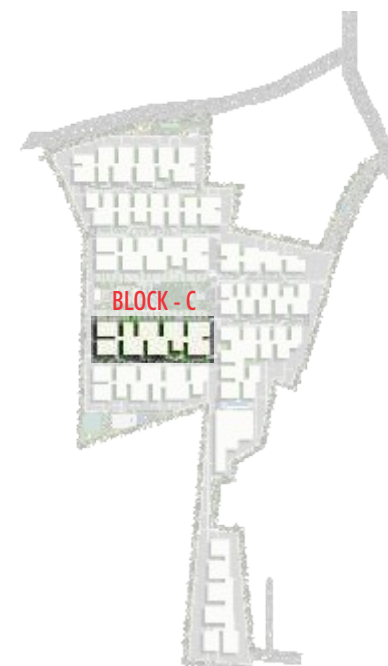


# BLOCK - B



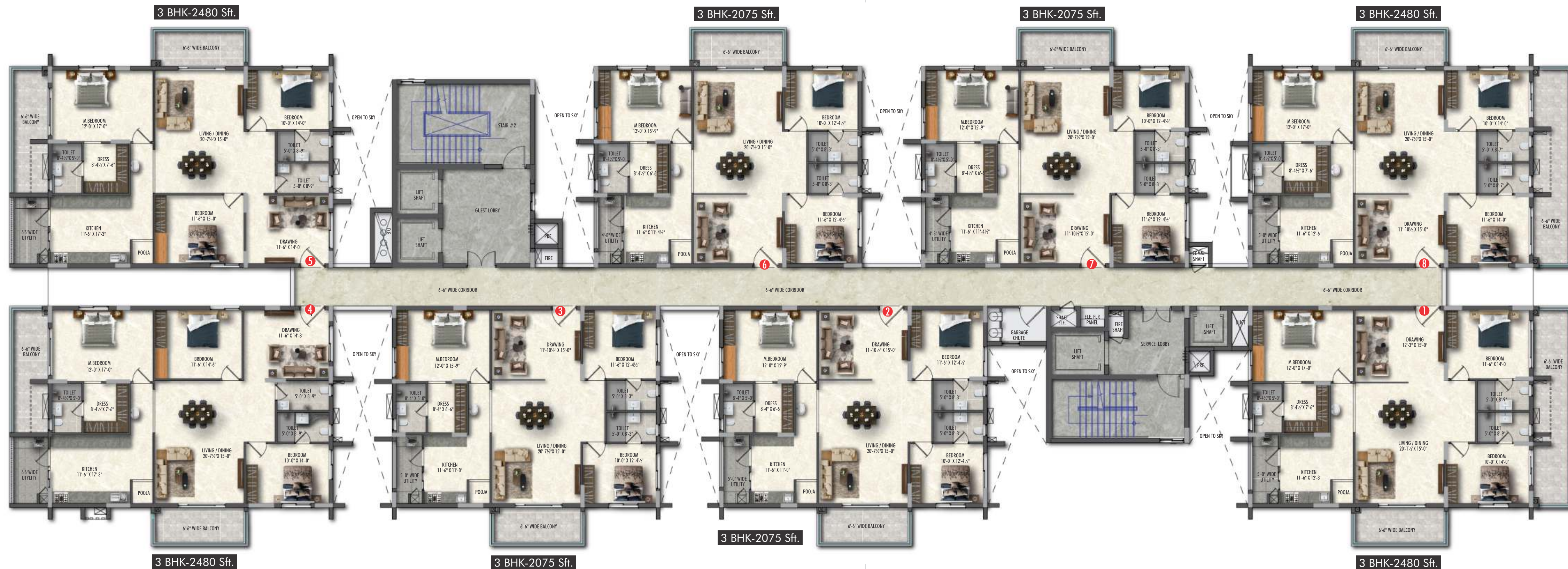


# BLOCK - C

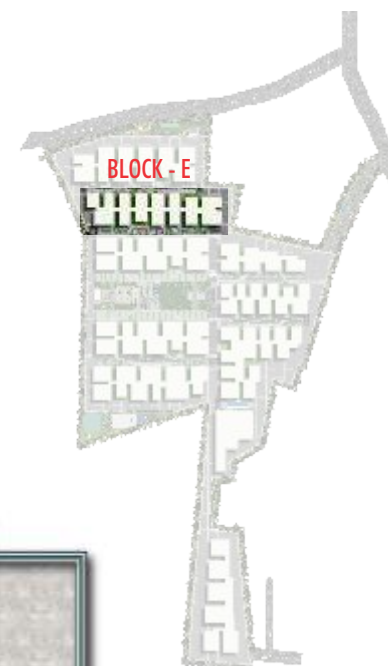




# BLOCK - D







2 BHK-1345 Sft.



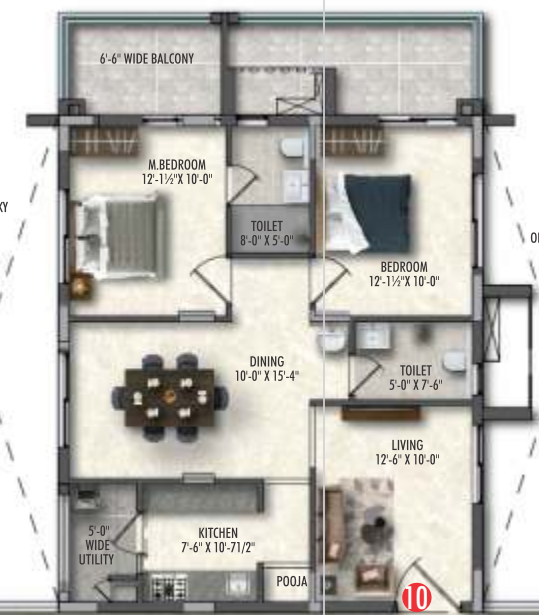
2 BHK-1310 Sft.



2 BHK-1310 Sft.



2 BHK-1310 Sft.



2 BHK-1310 Sft.



3 BHK-1685 Sft.



6'-6" WIDE CORRIDOR

6'-6" WIDE CORRIDOR

6'-6" WIDE CORRIDOR



3 BHK-2145 Sft.



2 BHK-1310 Sft.



2 BHK-1310 Sft.



2 BHK-1310 Sft.



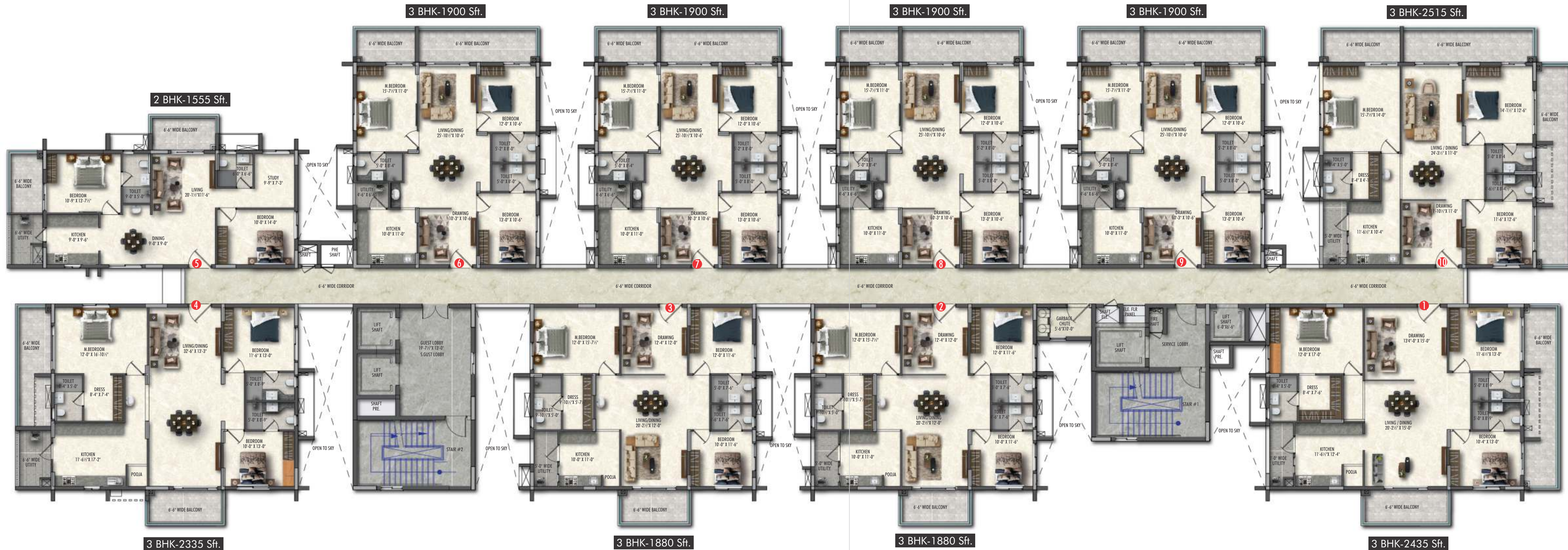
2 BHK-1310 Sft.



3 BHK-2150 Sft.



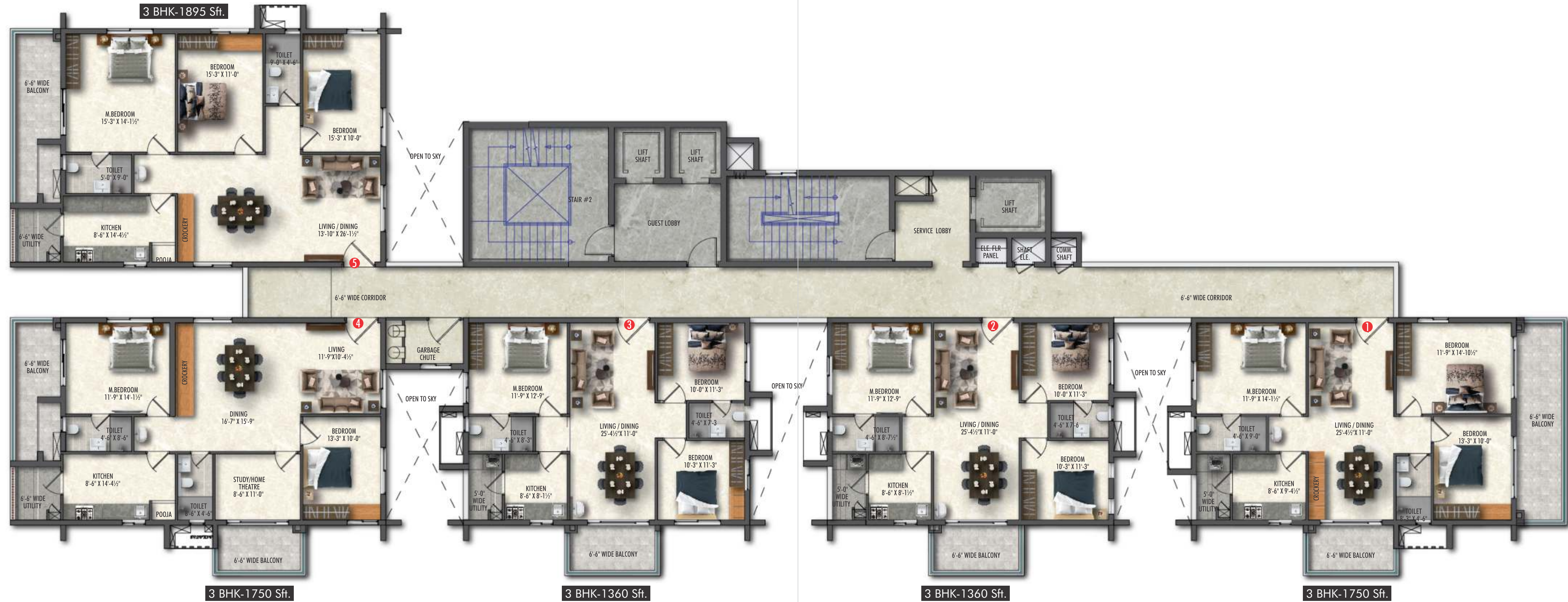
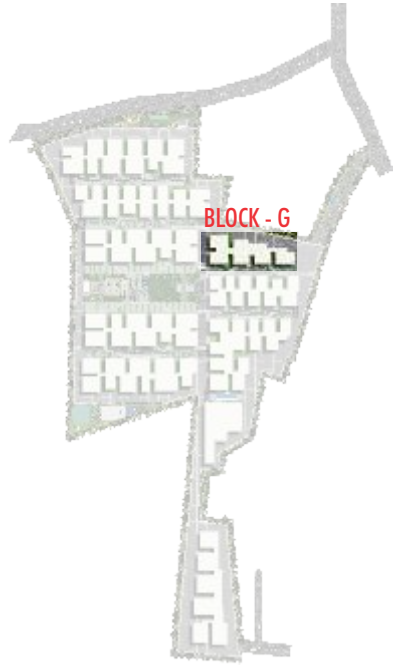
# BLOCK - F



BLOCK - F

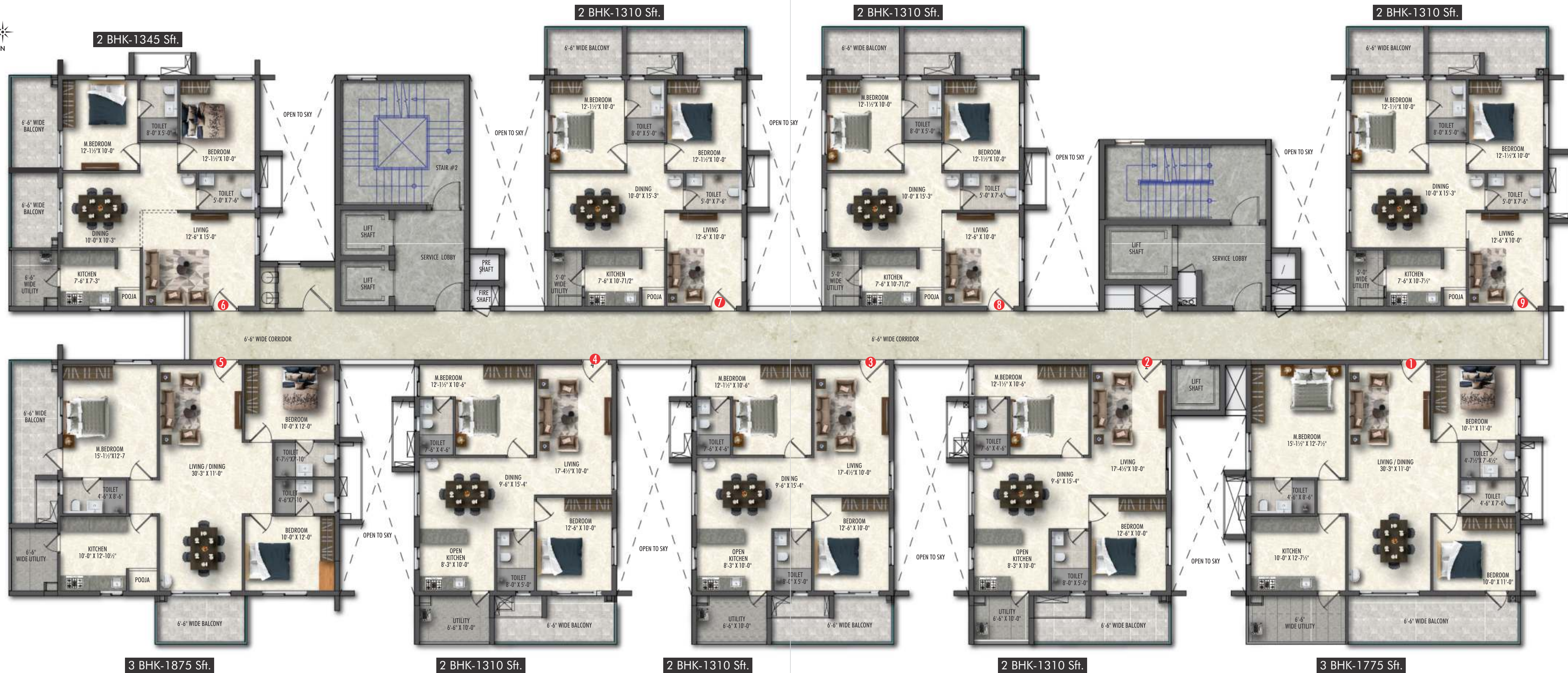


# BLOCK - G





# BLOCK - H











GREENSPACE  
**CELESTIAL**  
CLUBHOUSE

Live More, Live Well.







## Live More, Live Well.

Immerse yourself in the world of hobbits, entertainment and excitement. The hub of all lifestyles, our Clubhouse is home to 25+ amenities that create a perfect balance between the body and mind.

**CLUBHOUSE**  
**G + 5 FLOORS,**  
**34,000 + SFT.**

Clubhouse Reception







## Savour the wonderful moments

Get-together with friends or enjoy a refreshing drink with loved ones. Serving a range of foods and drinks, the elegantly designed cafeteria indulges you in the most enticing experiences.

Cafeteria







## Strive for a fitter, better you.

Work fitness into your life and feel happy with who you are. Add more weight to your lifts, more miles to your runs and more minutes to each gym session to make the progress you need and reach fitness goals.

Gym







## Catch up with your favorite flicks, at home.

Get your tub of popcorn, grab a soft drink and settle back to watch the latest movies on the big screen. With astonishing visuals and surround sound, the home theatre makes for an ultimate movie watching experience at home.

Home Theater







## Unwind, relax and just be yourself

Celebrate your special occasions and create some magical moments that your family and loved ones will remember for years to come- the exquisite Multipurpose Hall adds that charm and excitement to your party.

Multipurpose Hall







## Get active, have fun- play badminton

Boost your physical and social health by playing badminton daily. Providing a casual and enjoyable environment, the Badminton Courts in the community are convenient and perfect for those who'd like to practice, socialise and stay healthy.

Badminton Court







Squash Court

## Revel in the joy of refreshing indoor games

Keep yourself and kids involved in the plenty of engaging indoor games. Get entertained all day, without having to venture outside in the wet, cold or hot weather.

Billiards



Indoor Games







## Stretch your way to a healthy lifestyle

Climb out of bed, put your yoga clothes on, connect to yourself or master the Lotus Pose. Spend a few minutes in the aerobics hall, doing some stretching or dancing to your favorite tunes.

Yoga







## Relax & Unwind by the Water

Spend some time for yourself in the water or meet people who love to relax by the water. Or if there's a mood to play entertaining games with kids or your companions, nobody is there to stop you.

Terrace Swimming Pool





# SPECIFICATIONS

## SPECIFICATIONS

- R.C.C Framed Structure: R.C.C framed structure to withstand wind & seismic loads.
- Superstructure: 8" thick for external wall & 4" thick for internal walls with solid concrete block

## PAINTINGS

- External walls with two coats of exterior apex Paint of Asian / ICI / JOTUN or equivalent make over one coat of primer.
- Internal Walls with smooth finish with emulsion Paint of Asian / ICI/ JOTUN or equivalent make over a coat of primer over plastering.

## DOORS

- Main Door: Engineered Teak frame with engineered teak wood door shutters.
- Internal doors: Engineering wood frames with flush door shutters.
- French doors (if any): UPVC doorframes with clear float glass with mosquito net track

## WINDOWS

UPVC sliding window system with Float Glass as per design with mosquito net track

## FLOORING

- In Living, Dining, Bedrooms and Kitchen Vitrified Tiles of make Somany, Asian / Vermora or equivalent make.
- In Toilets: Acid Resistant, Anti-Skid Ceramic Tiles.
- In utility Anti-Skid Ceramic Tiles flooring and in balcony vitrified tiles

## KITCHEN

- Provision for fixing of water purifier, exhaust fan & chimney.  
BATHROOMS (Jaguar, Grohe, Hindware or equivalent)

- Washbasin with pillar cock.
- EWC with concealed flush tank.
- Single lever fixtures with wall mixer cum shower.
- Provision for Geysers in all bathrooms.
- All C.P. Fittings are chrome plated.

## DADOING

- Glazed ceramic tile dado of above mentioned make up to 8' feet height in toilets.
- Tiles above mentioned make Dado up to 3' height in utility wash areas.

## ELECTRICAL

- Concealed copper wiring of make Polycab/ Finolex/RR cable or equivalent per ISI standards.
- Power outlets for Air Conditioners in all rooms.
- Power outlets for geysers in all bathrooms
- Power plug for cooking range chimney, refrigerator, microwave ovens, mixer / grinders in kitchen, Washing machine and dishwasher in utility area.
- Three-phase supply for each unit and individual meter boards.
- A Miniature Circuit breakers (MCB) for each distribution boards.

## TELECOM / INTERNET / CABLE TV

- FTH to Internet, DTH, Telephone & Intercom.

## CAR charging point:

- Provision for car charging points at common amenities area.



## Less time driving, more time living

Take advantage of a location that adds 'convenience' to your lifestyle. A unique place adorned with the luxury of 'Walk to Work', Kokapet combines the metropolis life with serene, natural life.



Phoenix Greens Intl. School



Rockwell Intl. School



Financial District



Gachibowli IT Hub



Continental Hospitals



Outer Ring Road

## PROXIMITY

Phoenix Greens Intl. School	< 2 mins
Outer Ring Road	< 5 mins
Financial District	< 10 mins
Gachibowli IT Hub	< 10 mins
Continental Hospitals	< 10 mins



## OUR ONGOING PROJECT



### GREENSPACE MARVEL

3 & 4 BHK Luxury Apartments  
@ Puppalaguda, Hyderabad

## A FEW OF OUR COMPLETED PROJECTS



### GREENSPACE HILL PARK

3 BHK Villas  
@ Manikonda, Hyderabad  
Total Units 22



### GREENSPACE EMERALD VILLAS

3 BHK Villas  
@ Manikonda, Hyderabad  
Total Units 18



### GREENSPACE THE GRAND

3 BHK Luxury Apartments  
@ Puppalaguda, Hyderabad  
Total Built-up Area 80,000 Sft.



### GREENSPACE THE HIVE

2 & 3 BHK Apartments  
@ Alkapur, Hyderabad  
Total Built-up Area 2,22,000 Sft.



### GREENSPACE LOTUS

3 BHK Luxury Apartments  
@ Manikonda, Hyderabad  
Total Units 24



### GREENSPACE TULASI

3 BHK Luxury Apartments  
@ Manikonda, Hyderabad  
Total Units 35



### GREENSPACE SIGNATURE

2 & 3 BHK Luxury Apartments  
@ Manikonda, Hyderabad  
Towers: 6, Total Units 140



### GREENSPACE ASTER

2 & 3 BHK Luxury Apartments  
@ Manikonda, Hyderabad

# GREENSPACE

Live your space

Greenspace housing is one of the emerging real estate property developers in Hyderabad, India. They are an upcoming front-runner amidst multinational developers in India. Creating 'Serene Spaces' supported by meticulous team is the moto behind Greenspace housing and is evident in all their properties in Hyderabad. This principle is reflected in every facet of construction – from the master plan, development strategy, architecture, location, property management; down to every hinge, tile and square inch.



A Project by



FORTUNE  
BUILDERS  
building trust

GREENSPACE HOUSING & ENGINEERS PVT.LTD

3rd floor, Pavani Encore, Survey No. 342/P Puppalaguda Village Gram Panchayat, Gandipet Mandal, Hyderabad, Telangana - 500089

[info@greenspacehousing.com](mailto:info@greenspacehousing.com) | [www.greenapacehousing.com](http://www.greenapacehousing.com)

DISCLAIMER:

All dimensions are in Square Feet, and measured from finish to finish excluding construction tolerances. All materials, dimensions, and drawings are approximate only. Information is subject to change without notice, at developer's absolute discretion. Actual area may vary from the stated area. All images used are for illustrative purposes only and do not represent the actual size, features, specifications, fittings, and furnishings. The developer reserves the right to make revisions / alterations, at it's absolute discretion, without any liability whatsoever.