

created for a divine life



RERA NO: PO1100005787

@TELLAPUR-OSMAN NAGAR RD



# divine perfection is our mission

Divine Space is a premium offering from a company that has taken perfection to new levels – Divine Homes. Driven by the passion to create something new for the city's elite, Divine Homes presents a full-scale premium gated community of 8 stunning blocks on 8 acres of landscaped magic.

Divine Space in the future-ready locale of Tellapur-Osman Nagar Rd is a world you should call your own.



a divine space is  
designed for

# good life

Every apartment in Divine Space speaks of luxury. The ambience is warm and inviting, so each family member enjoys privacy as well as togetherness. The charming bedrooms, the sun-kissed kitchen and the lavish balconies blend in seamlessly, turning the indoor and outdoor into a complete experience.

a divine space is  
the finest designing



**2&3** PREMIUM  
RESIDENCES  
1230-2195 SQ.FT

**2** BASEMENTS  
GROUND +  
**12** FLOORS

DISABLED'S  
FRIENDLY  
ACCESS RAMPS

VAASTU  
COMPLAINT UNITS

SAFETY &  
SECURITY

CAR WASH

LAUNDRY  
ROOM

VISITOR'S  
WAITING  
LOUNGE  
AT EVERY BLOCK

DOMESTIC  
WATER  
AVAILABLE  
THROUGH A WATER  
SOFTENING  
PLANT

CCTV SURVEILLANCE,  
SOLAR FENCING,  
AUTOMATIC ENTRY AND  
EXIT SYSTEMS  
(BOOM BARRIER)

DRIVER WAITING  
LOUNGE  
DRIVER &  
MAID TOILETS



a divine space is  
a state of bliss

The stunning facade is an interesting work of art.

The towers stand tall on meticulously landscaped grounds. There is a lavish spread of greenery and walking tracks where residents can enjoy the breeze and the company of friends. The idea is to create happy spaces all around.



65% OPEN SPACES  
DESIGNER LANDSCAPE

WALKING/JOGGING PATH

a divine space is  
a state of bliss





a divine space  
pampers with you

# joys

Sometimes, a splash in our outdoor swimming pool is the best way to wash away the stress of everyday life. Head to the pool with the children and have the time of your lives. It can be equally entertaining from the deck side seating, so grab lemonade and watch the action.

  
**DIVINE**  
—SPACE—

a divine space is **40,000 sft**  
**Clubhouse**



**DIVINE**  
— SPACE —  
CLUB DIVINE





FAMILY SWIMMING POOL WITH SEATING DECK



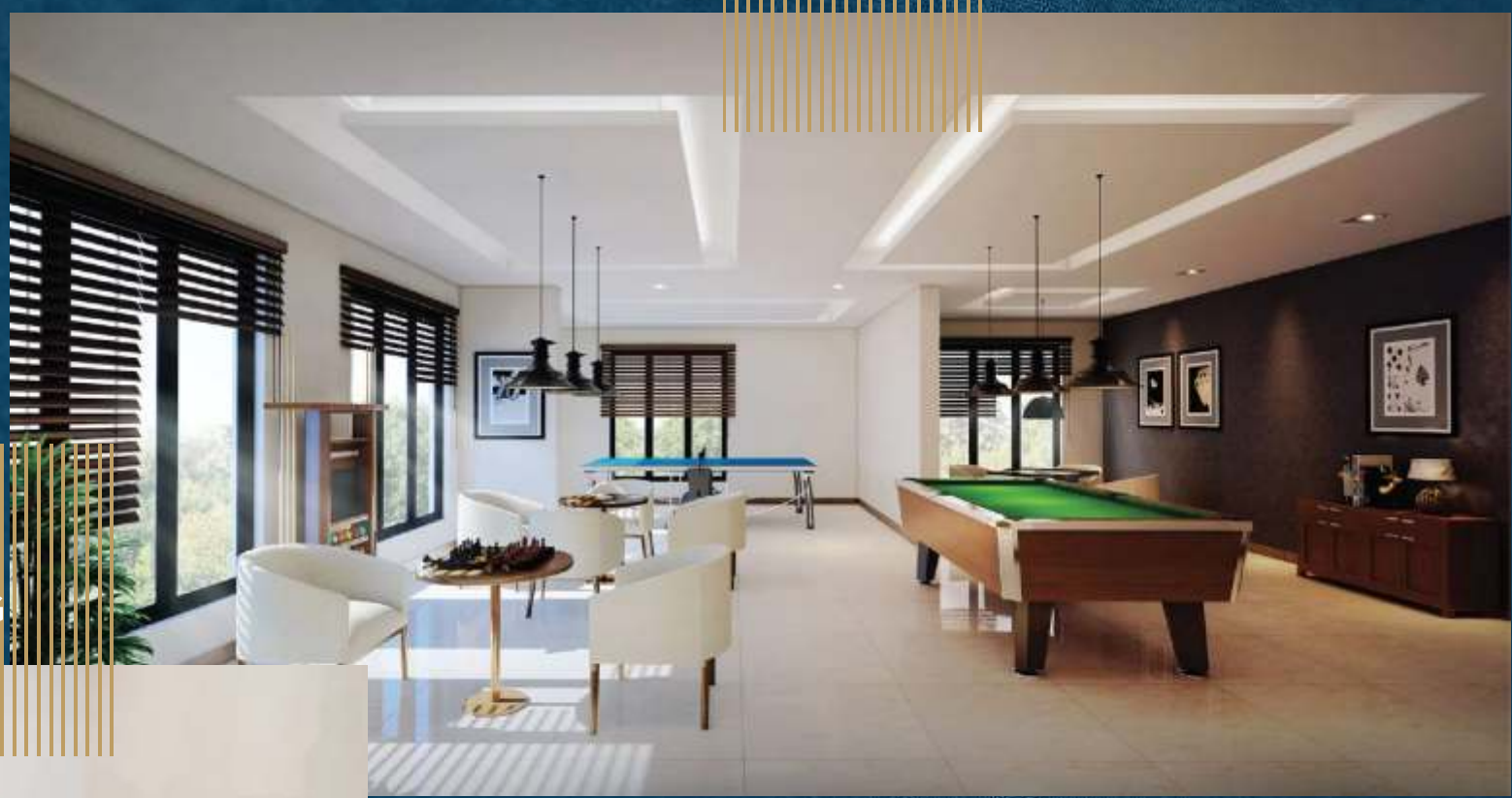
CRECHE



INDOOR BADMINTON COURT



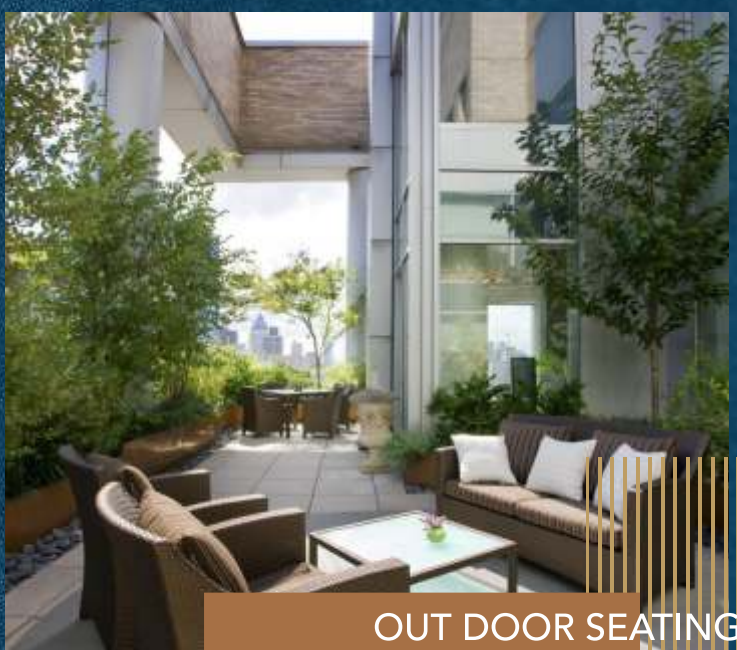
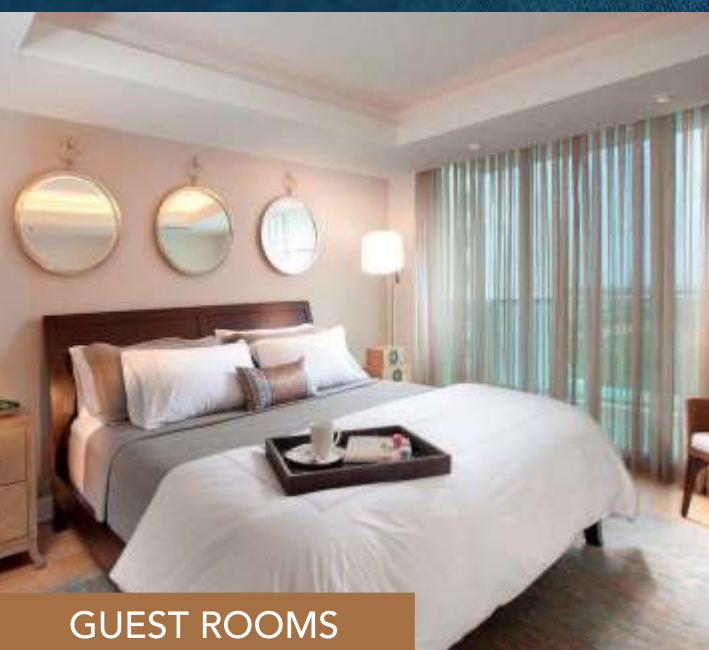
INDOOR GAMES



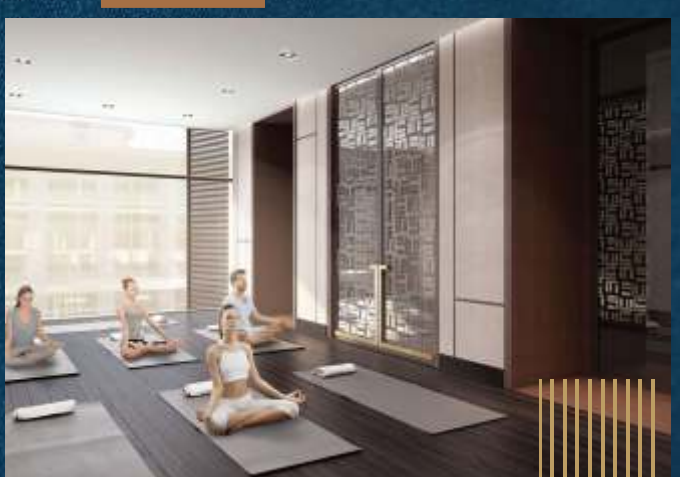
WELCOME LOUNGE



COFFEE SHOP



BANQUET HALL



YOGA/MEDITATION



SQUASH COURT

a divine space is  
luxuries filled  
lifestyle at your  
doorstep



PROVISIONS

SALOON / SPA  
DR ROOM  
ATM  
SUPER MARKET

GYM

**DIVINE**  
— SPACE —



a divine space is  
a space to activate  
your energies

**DIVINE**  
-SPACE-



BASKET  
BALL COURT



KIDS PLAY AREA



TENNIS COURT



OUTDOOR GYM



a divine space is  
a safe and secured  
kidsworld



DIVINE  
—SPACE—



Our architects and designers are inspired by the elegance of nature, and have turned Divine Space into a gorgeous blend of modern architecture and bountiful greenery. The towers are defined by sleek lines, and surrounded by open space and the skies above. It's the perfect setting for a divine life.

a divine space is  
designed by nature



DIVINE  
—SPACE—

a divine space is  
future ready homes

master plan



electric charging  
Electric car charging point, for a fuel-efficient tomorrow



pet park  
A Well equipped dedicated pet park for free space to pets



energy efficiency  
Designed to reduce energy consumption



water-efficiency  
The plumbing system is designed to reduce water consumption



ventilation  
Designed to maximise natural ventilation

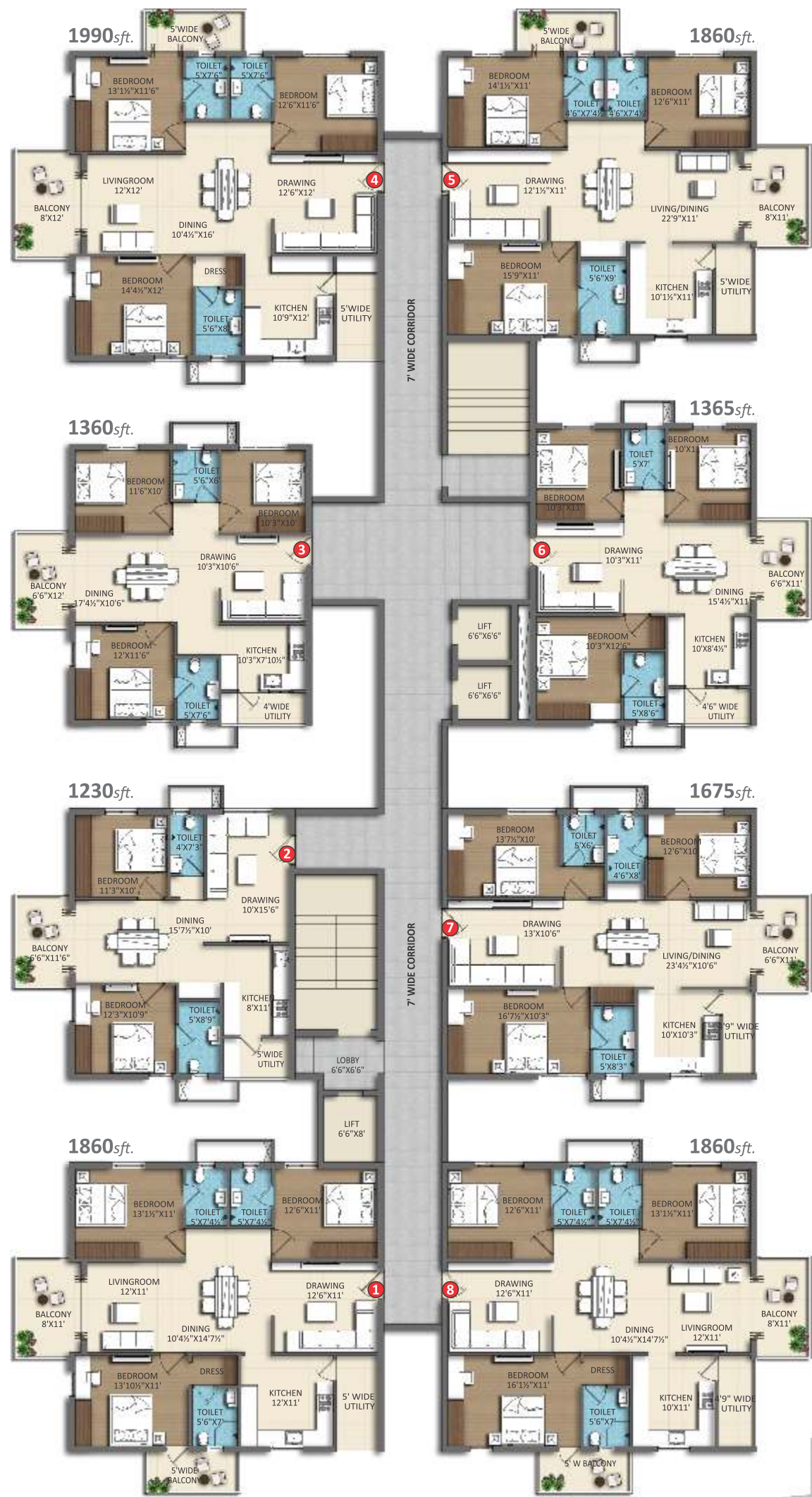


# master plan

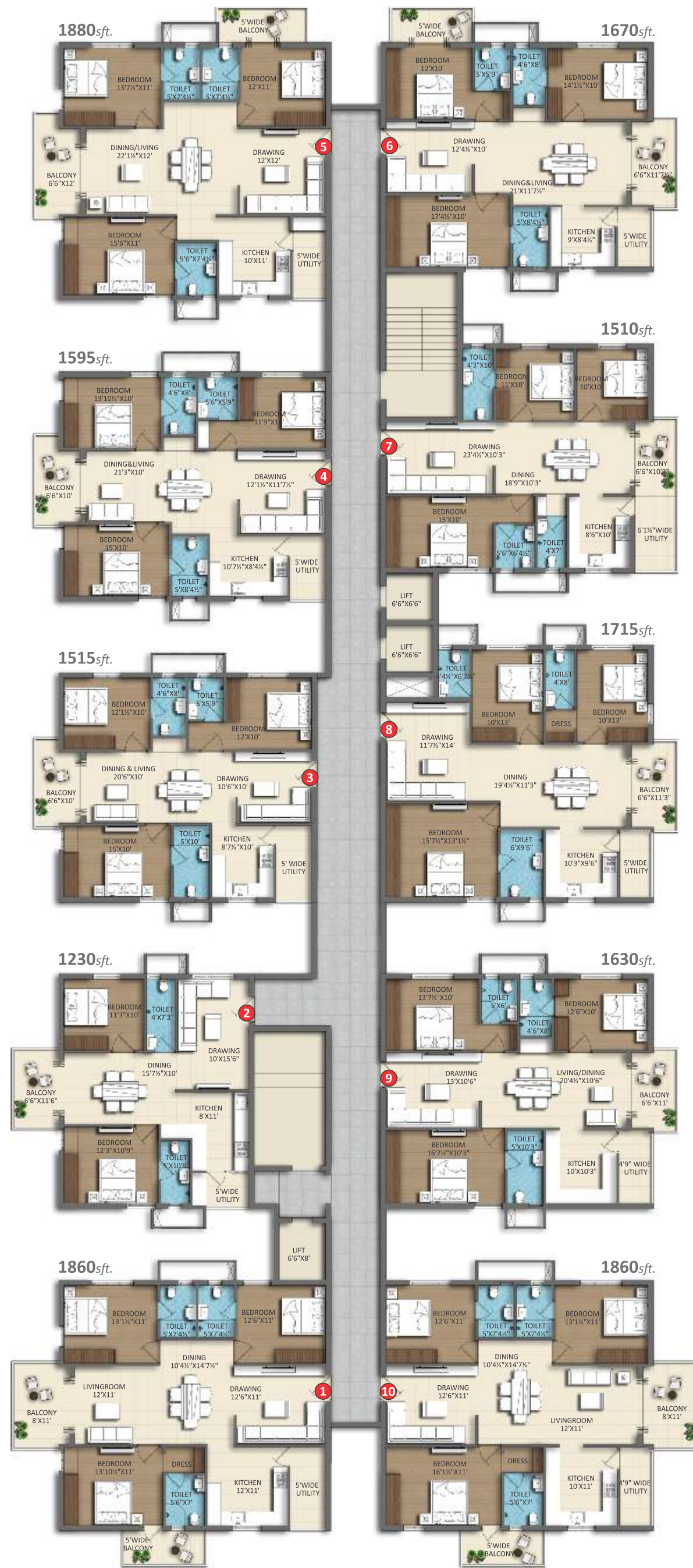


## LEGEND

- ① Entrance
- ② Exit
- ③ Entrance Flooring Plaza
- ④ OAT
- ⑤ Pet Park
- ⑥ Halfbasketball Court
- ⑦ Cricket Pitch (Practice)
- ⑧ Tennis Play Court
- ⑨ Children's Play Area
- ⑩ Open Fitness
- ⑪ Senior Citizen Area Under Pergola
- ⑫ Pergola
- ⑬ Party Lawn
- ⑭ Water Features
- ⑮ Jogging Track
- ⑯ Driveway



TYPICAL FLOOR PLAN  
AIBICIF&G BLOCKS



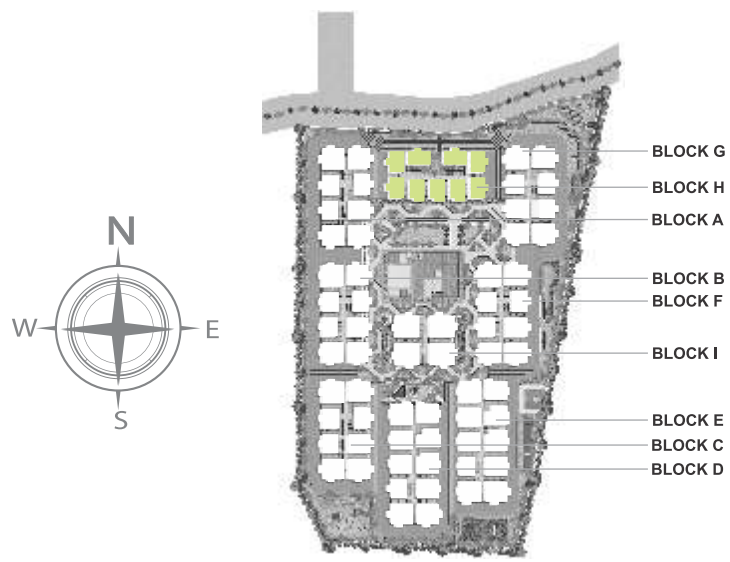
TYPICAL FLOOR PLAN  
D&E BLOCKS

a divine space is  
living open & healthy



  
**DIVINE**  
—SPACE—





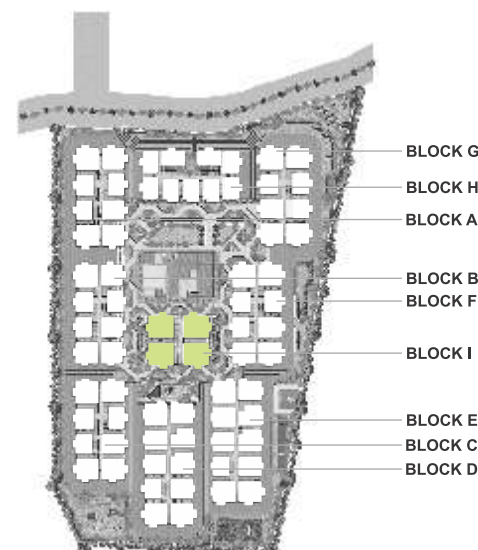
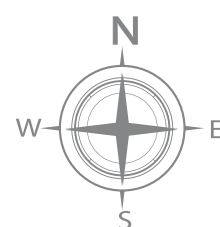
TYPICAL FLOOR PLAN  
H BLOCK



# specifications



TYPICAL FLOOR PLAN  
I BLOCK



**FOUNDATION :** RCC Structure to withstand wind & Seismic loads.

**SUPER STRUCTURE :** 9" thick cement solid brick blocks for external walls & 4½" thick concrete blocks for internal walls.

**PLASTERING :** External and Internal walls double coat cement plaster with smooth finish.

**DOORS**  
**Main Door :** Engineered wood / Teak wood frame & teak veneered shutter, aesthetically designed and finished with melamine polish and fixed with hardware of reputed brand.  
**Internal Doors :** Engineered wood / Teak wood frame & flush shutters, aesthetically designed and fixed with hardware of reputed brand.

**French Doors :** uPVC/High-end door frames with glass paneled sliding shutters and with extra track provision for mosquito mesh.

**Windows :** uPVC/High-end window system with glass and with mosquito mesh. Aesthetically designed, Mild steel (MS) grills.

**PAINTING/CLADDING**  
**External :** Textured finish and two coats of exterior emulsion paint, over a coat of primer of reputed brand.  
**Internal :** Smooth finish with two coats of putty, two coats of acrylic emulsion paint, over a coat of primer of reputed brand.

**FLOORING**  
**Living, Drawing & Dining :** 800x800mm size double charged vitrified tiles of Kajaria/Rak or equivalent..  
**Bedroom :** Kajaria/Rak or equivalent wooden color flooring tiles.  
**Kitchen :** Cladding upto 2' height above the platform with wall tiles of reputed make.  
**Utility :** 2'X2' rustic - finish premium vitrified tiles of reputed make.  
**Balcony & Sit-out area :** 2'X2' rustic-finish premium vitrified tiles of reputed make.  
**Bathrooms :** Acid resistant, anti-skid ceramic tiles of reputed make.  
**Corridors :** Pre-polished granite flooring.  
**Staircase :** Granite/Natural Stone.

**TILE CLADDING**  
**Bathrooms :** Up to 7' door height with premium digital printed ceramic tiles Kajaria/Rak or equivalent brand  
**Utilities area :** Up to 3' height with ceramic tiles of reputed make.

**KITCHEN**

- Individual Tap for cooking, washing and other purpose.
- Separate Municipal Water tap for drinking water.
- Provision for Dish washer & washing Machine in the Utility area.
- Piped Gas with prepaid meters.

**BATHROOMS :**

- Washbasin of premium brands like Roca/Kohler/Toto Queo or equivalent brand.
- Wall hung EWC of Kohler/Roca/Duravit/Toto/Essex.
- Concealed flush tank or flush realer. Single lever diverter of Kohler/Jaquar/Queo/Toto/Essex or equivalent make for mixing of hot and cold water.
- Provision for geysers in all bathrooms.
- All CP fittings are chrome plated of Kohler/Jaquar/Queo/Toto/Essex or equivalent make.

**ELECTRICAL :**

- Concealed copper wiring of Havells/Finolex/Rr
- Kabel/Polycab or equivalent make.
- Power outlets for geysers in all bathrooms. Power plug cooking range, chimney, refrigerator, microwave ovens, mixer/grinders in kitchen, washing machine & dish washer in utility area.

- Plug points for TV with data cable in all bedrooms and living room.
- 3-Phase power supply for each unit with prepaid meters.
- Miniature Circuit Breakers (MCB) for each distribution boards of Legrand/Havells/Schneider or equivalent make.
- Elegant designer modular electrical switches of Legrand/Havells/Schneider or equivalent make.

**CABLE TV :**  
 Provision for cable connection in master bedroom & living room in each apartment.

**INTERNET :** Internet wiring provision in dining and master bedroom.

**WTP & STP**

- Domestic use water is made available through an exclusive water softening plant (Not RO plant)
- Municipal Water and bore-well Water will be supplied to the kitchen by separate lines. A sewage treatment plant of requisite capacity will be installed as per norms inside the project premises and the treated water will be used for the landscaping & flushing purposes.

**POWER BACKUP**

- 1KVA power backup for each flat.
- Facility for lights and common areas
- Generator of AMF, Kirloskar Cummins or equivalent make provided.

**SECURITY / BMS :**

- Sophisticated round-the-clock security / surveillance systems.
- Solar power fencing all-round the compound wall and security screening of visitors.
- Surveillance corners at the main security and entrance of each block to monitor.
- Reticulated gas supply to every units kitchen connected to the control manifold.

**CENTRALIZED WATER SUPPLY**

- A centralized underground sump will be provided for the entire community.
- Water supply to every unit by hydro-pneumatic pressurized system.

**MAIN LANDSCAPING WORKS**  
 Beautiful and utility designed landscaping with footpath, designed activity areas, sitting areas, lighting, children's play area etc., provided for the community.

**LIFTS**  
 8 passengers lift shall be provided of KONE/JOHNSONS/OTIS or equivalent make (SS cabin and automatic doors).

**PARKING MANAGEMENT**  
 Entire parking is well designed to accommodate all the unit's cards. separate entrance, exit, parking signage, driveways, equipment etc., are installed to ease parking and departures.

**FIRE SAFETY**  
 Fire hydrant and fire sprinkler system in all floors and basements as per government norms being provided. Fire alarms and Public address system in all floors and parking areas (basements) will be installed with control panels at the Main security rooms.

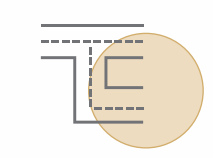


## a divine space is central to life

Located around Kollur and amazingly close to the ORR and financial district, Divine Space is well connected to the IT hub and new NEOPOLIS SEZ. As well as other important parts of the city. With academic institutions, workspaces and world-class medical hubs at a stone's throw, this is an area set to escalate in value by leaps and bounds.



LOCATION QR CODE



### CONNECTIVITY

- ORR Access - 5 Mins.
- Nagulapalli MMTS Station - 8 Mins.
- Velimela - 10Mins.
- Tellapur - 14Mins.
- Kokapet - 20 Mins.
- Financial District - 20Mins.
- Muthangi Junction - 20Mins.
- Kondapur - 30Mins.
- Hitech City - 32 Mins.
- RGI Airport - 40 Mins.



### HEALTH AND HOSPITALS

- Citizen Hospital
- Continental Hospital
- Care Hospital
- Sunshine Hospital
- AIG Hospital
- Apollo Hospital
- TIMS



### IT PARKS

- Franklin Templeton
- Capgemini
- CA Technologies
- Wipro Campus
- Microsoft Campus
- Infosys Campus
- TCS, Wave Rock
- Amazon
- Honeywell
- Google



### RECREATION

- Sky Zone
- Lahari Resorts
- Golkonda Resorts
- Gandipet lake
- Pragati Resorts



### EDUCATIONAL INSTITUTIONS

- Delhi Public School -
- Oakridge Int. School
- Open Minds - A Birla School
- Manthan International School
- Samashti Int. School
- The Gaudium School
- ISB Campus
- Indus Int. School
- ICFAI Business School
- CBIT



## BROUGHT TO YOU BY A FUTURISTIC TEAM

'Divine Space' is a project of Divine Homes - a team with the vision and imagination it takes to create a project that answers every modern requirement while maintaining a holistic way of life. Divine Homes is defined by professionalism and expertise; delivering on-time projects right from the acquisition of land, appointment of architects and designers, to the construction, sales and after sales service.

**DIVINE ALLURA- CHANDANAGAR**

RECENTLY COMPLETED PROJECT



### Corporate Office

DIVINE HOMES  
# 10&102, Gracious Homes,  
Mythri Nagar, behind Bharat Petrol bunk,  
Mdinaguda, Hyderabad- 500 049.

Mail: [divinehomes2016@gmail.com](mailto:divinehomes2016@gmail.com)

Mob : +91 9542030303, 9542040404

[www.thedivinehomes.com](http://www.thedivinehomes.com)

### Site Address

Osman Nagar, Hyderabad,  
Telangana- 500 019



LOCATION QR CODE



WEBSITE QR CODE



BROCHURE QR CODE



A MEMBER OF  
**CREDAI**  
TIRUPATI

## TEAM

Architects



**DESIGN SPACE**  
[www.designspace.in](http://www.designspace.in)

MEP Consultant



**ESVE Design Solutions**  
Pvt. Ltd  
Bengaluru

Landscape



**I Squared Architects**  
Hyderabad.

Note : This document has been produced by the developer for advertising and general information only. The developer and its project team do not guarantee, warrant or represent that the information contained within this document is correct. Any interested party should undertake their own enquiries as to the accuracy of this information. The developer excludes unequivocally all inferred and implied terms, conditions and warranties arising out of this document and excludes all liability for loss or damage arising there from. Images shown are Artist Impression and shown for illustrative purposes only. The plans are based on the current design for this development. Changes will undoubtedly be made through development, and dimensions, fittings, finishes and specifications are subject to change without notice. The location of all architectural features on the façade including vertical panels and fins will vary on each type plan and level. Their location on the marketing material is indicative of the design intent. The information contained herein is believed to be current, but is not guaranteed. Prospective purchasers must rely on their own enquiries. Furniture is not included. This document is for guidance and does not constitute an offer of contract.